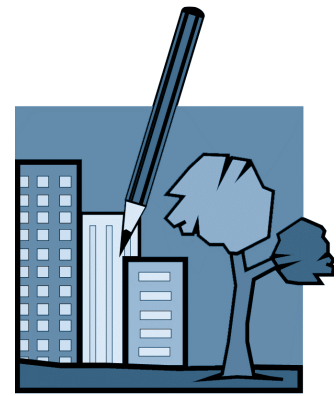


Resume: Mary Maher

Facilitation, communications & strategy

Mary Maher, principal consultant of her Brisbane-based consultancy, is a practitioner in environmental, social, urban and sustainability strategies.

She specializes in facilitation of group dynamics and dialogue specifically aimed at strategic planning – where a group develops a shared understanding of emerging issues, engages in problem solving and strategy development moving through to evaluating performance and overall progress.



MARY MAHER
AND ASSOCIATES



Career summary

She has 28 years' professional experience including:

- lecturing in universities for 11 years (Australia, University of Surrey, UK and University of Nanjing, China),
- senior policy adviser and Branch director in Brisbane City Council for 5 years managing a team of 24 environmental scientists and planners;
- in private consultancy for 12 years managing a small business of six staff;
- a range of government appointments including two Government-owned Board directorships, SunWater and Port of Brisbane Corporation.

Qualifications and memberships

- BA, Dip Ed., M.Sc. (AES), M.Sc. (STS)
- Fellow of Environment Institute of Australia & New Zealand (EIANZ)
- Graduate, Australian Institute of Company Directors (AICD - to 2007)
- Planning Institute of Australia (PIA)
- International Association of Facilitators (IAF)

Specialist in strategic planning, group facilitation and training

Mary specializes in group facilitation, communication, collaboration and partnership-building. She has facilitated one-off as well as developmental processes of consultation. She has worked with multi-stakeholder groups, Executives and Boards and staff teams in the Commonwealth Government and State Government processes as well as scientific organizations, corporations and rural and urban communities. Her broad expertise includes the following:

1. Corporate strategic planning and organizational arrangements, stakeholder engagement
2. Climate change, energy and sustainability
3. Reef, Murray-Darling Basin and Natural Resource Management
4. Urban land use and master planning
5. Training and mentoring in organizational arrangements, climate change strategies, market-based instruments, social impact assessment, facilitation skills and consultancy business development.

Telephone 07 3844 9183 Facsimile 07 3844 3357
17 Katrine Street, West End Queensland 4101 Australia
email: mail@marymaher.com.au web: www.marymaher.com.au
ACN 074201031
ABN 24 074 201 031

Mary's background and areas of professional expertise >2010

Professional areas	Relevant experience in summary
Sustainability planning	<ul style="list-style-type: none"> • Corporate Social Responsibility Reports for >10 corporations • Past President (Qld) and Fellow of Environment Institute of Australia and New Zealand
Urban development	<ul style="list-style-type: none"> • Representative, Brisbane Inner City Advisory Committee 2006>; member City South Liaison Committee 2005>; President West End Community Association 2002>
Water planning	<ul style="list-style-type: none"> • Minister's ROP Referral Panel 2002-03 • SunWater Board Director 2003-2007
Energy efficiency strategy and policy	<ul style="list-style-type: none"> • 2007 trainee for the international <u>Climate Project</u> • Masters of Science research thesis on energy efficiency • Facilitation CSIRO Energy Futures Forum workshop for peak industries
Infrastructure planning	<ul style="list-style-type: none"> • Director, Port of Brisbane Corporation 2000-06 • Director, SunWater 2003-06
National and regional strategies for natural resource management	<ul style="list-style-type: none"> • Twenty five years project experience in strategy and policies for land use planning, ecosystem services, state of environment reporting • Over 10 national projects on river legislation, catchment management, Reef protection, and water quality; five manuals for NRM, EMS and environmental management for Local Governments
Corporate sustainability, business planning, organizational structure	<ul style="list-style-type: none"> • Business strategies for sustainability, corporate performance planning and evaluation • Over 20 Local Government sustainability strategies • Member, Australian Institute of Company Directors • Business plans for several professional institutes (pro bono)
Social and economic assessments	<ul style="list-style-type: none"> • Social impact assessment for environmental flows in Murray Darling Basin • Social and economic assessment training for Dept of Natural Resources and Water (Qld)
Facilitation and communication processes	<ul style="list-style-type: none"> • >5 major Commonwealth-State community summits (200+ participants) • >10 Community engagement strategies for conservation, urban planning, impact assessment • >80 workshops for Councils, CSIRO, Regional Bodies, State Departments, professional associations and infrastructure proponents • Mary Maher & Associates <i>Facilitation Plus</i> training course

Mary's brief curriculum vitae

Mary Maher is a communicator and facilitator in the fields of environmental, social, urban and corporate planning and performance.

With more than 25 years experience in over 150 technical, consultative and strategy development projects she has worked across the disciplines which form the basis of natural resource management, energy and water efficiency, community development, urban planning and corporate arrangements for sustainability.

Working for clients in Commonwealth, State and Local Government, national research organizations, regional and industry bodies and community associations, **Mary has designed and implemented communication, consultation and deeper engagement processes** to ensure project decision-makers are conversant with key stakeholders' aspirations, needs and recommendations. Effective strategy development then has a foundation of information and understanding about people's perceptions, concerns and expectations.

She has been a professional representative on a number of Committees and Boards. She has been a Director on two Government-owned Corporation Boards - Port of Brisbane Corporation and SunWater. She has also undertaken the following: deputy Chair of the Coastal Protection Advisory Council 2000 - 2004, Chair of the Brisbane River Management Group's Management Plan Committee (1994 - 1998), president of the Environment Institute of Australia and New Zealand (Qld 1998-2003). Until 2008 she was a member of the Urban Environment Professional Advisory Group, School of Urban Environment at QUT and of the Advisory Board to the Queensland Museum's Southbank Campus. She is currently Chair of West End Community House, a neighbourhood centre.

Mary has been a team member in five award-winning environmental planning projects with the Planning Institute of Australia, one of which have won the national award and another which was the overall winner.

In 2007, Mary trained as an Al Gore Climate Project presenter and communicates climate change issues in a number of forums including schools, community organizations as well as businesses. She has also been a community representative in a number of Brisbane planning initiatives. She was the inaugural President of the West End Community Association and is a board member of the neighbourhood centre, West End Community House, in Brisbane.

Mary Maher is an experienced facilitator and community engagement program manager. She specialises in design and conduct of strategic planning, collaborative planning and stakeholder engagement activities for organisations at corporate, shire, regional and national scales.

Mary has extensive experience in design and conduct of stakeholder engagement and dialogue strategies - from initial scoping and search exercises, to creating ways to generate stakeholder interest in projects, developing information packages which build people's capacity to participate and have dialogue, and to options development and negotiation of preferred strategies and how stakeholders will contribute to implementation of the agreed directions. Her facilitation and planning projects include strategic and corporate plans for Councils and a number of professional bodies.

Project experience 2006-2010

Climate change, energy and sustainability

National Climate Change Adaptation Research Facility Two-workshop sessions to identify major challenges Australia faces for its CC adaptation and to define the role and key focus areas for the NCCARF for the next 3 years >2012	Marie Warschka, Coordinator m.waschka@griffith.edu.au
Energy Transition Taskforce, Sunshine Coast Regional Council Facilitation of inaugural meeting to define priorities and key actions for transitioning the region in the face of CC and fuel supply uncertainties	Philip Woods, Coordinator Philip.woods@sunshine.qld.gov.au
U21 Summer School – Climate Change Adaptation Master planning of two-week Conference program for delegates from 18 Universities from 14 countries Website: http://www.universitas21.com/event/090714SummerSchool.html	Professor Martin Bell Martin.bell@uq.edu.au
Twenty presentations 2007-2008, The Climate Project, ACF Voluntary presentations to Brisbane businesses, community groups and consultancies as an Al Gore presenter	View Project website http://www.acfonline.org.au/default.asp?section_id=224
Key note address, Environmental Institute of Australia and New Zealand Climate change Boot Camp, key note address: Everyone is a Climate Change practitioner	Simon.cavendish@enviropartners.com
Southern Gulf Climate Change Forum, Mt Isa Risks and Responses working session, local initiatives presentation	Donald Coventry, Southern Gulf NRM 07 47431888
COAG Adaptation Working Group, Climate and Water Subgroup Two working sessions of the Subgroup of Commonwealth and State agencies with invited specialists to scope impacts and adaptation initiatives for COAG consideration	Adrian Jeffreys Adrian.jeffreys@premiers.qld.gov.au
CSIRO, Energy Transformed Flagship Program – Future Fuels Scenarios Forum 2008 Design and conduct of five workshop sessions with industry-NGOs-agencies to examine the future fuels scenarios to 2050 Report: http://www.csiro.au/science/FutureFuelsForum.html	Dr Paul Graham Energy Technology Division Paul.graham@csiro.au
CSIRO, Energy Transformed Flagship Program – Future Fuels Forum 2007 Energy Futures Scenarios - design and conduct of five workshop activities with industry-NGOs-agencies to examine a series of energy futures for Australia Report: http://www.csiro.au/science/EnergyFuturesForum.html	Dr Paul Graham Paul.graham@csiro.au
Brisbane City Council, Carbon Sink for South-east Queensland 2007 Workshop with regional Council officers and industry to examine implications of achieving major increases in the remnant vegetation cover to maximize the carbon sink function within region.	Lex Drennan, Brisbane City Council Lex.drennan@brisbane.qld.gov.au
Reef Protection Plan - Proposed Framework for the Reef and Catchments Partnership A workshop with Commonwealth and State agencies and 6 NRM Regional Bodies to determine the recommended Partnership framework for the long-term protection of Reef water quality.	Rachel Eberhard Program Coordinator, Reef Partnership 0432 683 598
Queensland Water Commission, Industry Compliance Workshop 2007	Greg Oliver, strategic

Resume: Mary Maher

Workshop facilitation with industry & LG to build a joint approach to achieving Level 6 Water Restrictions primarily in buildings and industrial user groups	OliverG@qwc.qld.gov.au
Urban Water Research Alliance, SEQ region	Mark O'Donohue
Design and delivery of a planning workshop for the consortium of universities, agencies, Qld Water Commission and local governments to set priorities for urban water research.	modonohue@ozemail.com.au

Reef, Murray-Darling Basin, Moreton Bay and Natural Resource Management programs

Reef Summit, Department of Premiers and Cabinet 2008	Bruce Stewart, Director, Policy Division
Design and conduct of a multi-stakeholder Summit in Parliament House to define critical issues and way forward for the five-year Reef Protection Plan 2008-2013	Bruce.stewart@dpc.qld.gov.au
Market based instruments, Department of Natural Resources & Water 2008	Claire Heath, MBI project coordinator,
Two-day training course design and delivery of six sessions in Queensland and NSW; presentation at the national MBI Forum in September 2008	Claire.heath@nrw.qld.gov.au
Great Sandy Strait Draft Marine Aquaculture Plan, Department of Primary Industries and Fisheries 2008	Samantha Miller, principal planner
Facilitation of six public forums to inform multiple stakeholders about the Plan and to identify key issue areas and ways forward	Samantha.miller@dpi.qld.gov.au
Nitrogen applications workshop, CSIRO 2007	Peter Thorburn, principal scientist
Workshop with multiple stakeholders to assess nitrogen application options for canefarming.	Peter.thorburn@csiro.au
Horizons Strategy, State level Regional Groups' Collective for NRM 2007	Andrew Drysdale
With Drs Michael Gutteridge and Ann Peterson, <i>Horizons Strategy for Regional Natural Resources Management beyond 2008</i> , Regional Groups Collective, 2006	CEO, RGC 0407 634224
SEQ Catchments (South-east Queensland NRM Regional Body) 2006	Deborah Metters
A one-day workshop to develop the 2006-09 business plan for Land for Wildlife Consortium operating across State agencies and Local Governments in SEQ.	dmetters@seqcatchments.com.au
Reef Water Quality Partnership & CSIRO Water for a Healthy Country Flagship 2006	Jane Waterhouse
A two-day workshop on the past, present and future of water quality modelling in Great Barrier Reef catchments and designing for an integrated approach to all future modelling exercises	Science Coordinator, Reef WQ Partnership 07 4753 8528
Murray-Darling Basin Commission, Community Advisory Committee	Dr Ian Falconer
Design and delivery of Sector Forum & Workshop to prepare submission to MDBC & Federal Government on urgent intervention.	cac@mdbc.gov.au
Department of Natural Resources and Water & FNQ NRM 2006	Christina Dwyer, Natural Resources Science Program
NRM Knowledge Systems Symposium	Christina.Dwyer@nrw.qld.gov.au
A two-day workshop on diverse knowledge systems and their incorporation into the change processes for improved natural resource management in Australia.	
National Chairs Working Group & Department of Natural Resources & Management 2006	Jenny Awbery

Resume: Mary Maher

<p>Review of National Chairs Forum and future strategy for 56 Chairs of Australia's Natural Resource Management Regional Bodies</p> <p>DNRW, Review of the Vegetation Management Act (1999) 2007</p> <p>With the charter of preparing the Government's Independent Review of the Act, the consultation process involves focus groups, an on-line survey, meetings with peak bodies on Reference Group and a stakeholder workshop.</p> <p>Queensland Wetlands Program, NRW</p> <p>Facilitation of a State-wide workshop series for wetlands practitioners to evaluate progress and future needs / arrangements; input to final Wetlands Census report</p> <p>Land and Sea Management Centres Review - Agriculture, Fisheries and Forestry Australia</p> <p>Input to Review of Land & Sea Management Centres on Cape York</p> <p>DNRW, Premier's and C'wealth Department of Environment</p> <p>Regional workshops in the Reef catchment for the intergovernmental evaluation report: <i>Review of NRM Plans' alignment with Reef Protection Plan 2006</i> (with Dr A Peterson and Michelle Walker)</p> <p>FNQ NRM Lessons from Cyclone Larry</p> <p>Community forum to document impacts on the natural environment and lessons learnt about clean-up and promotion of natural recovery processes in the Wet Tropics region of FNQ</p> <p>Qld Murray Darling Basin Committee, Indigenous Program</p> <p>Working with IP manager and elders to develop the indigenous community's communication strategy for engagement in the natural resource management program</p> <p>State Investment Program Evaluation project</p> <p>Facilitation of workshops and evaluation report input for the NRM State Investment program projects under NHT2.</p> <p>Department of Natural Resources and Water</p> <p>Wetlands Program National Indicators Design workshop</p> <p>Design and conduct of a two day national workshop on conceptual models for scoping indicators for scientific, community and policy.</p> <p>Environmental Protection Agency, Burnett-Mary Regional Group, SEQ catchments & Local Government Association of Queensland</p> <p>Facilitation of a series of workshops in a team with Lloyd Consulting to design and evaluate a pilot exercise for SoE Online.</p>	<p>j.awbery@nrw.qld.gov.au</p> <p>Evelyne Meier, special projects manager, Evelyne.meier@nrw.qld.gov.au</p> <p>Peter McDonald QWP Peter.McDonald@epa.qld.gov.au</p> <p>Dr Ann Peterson a.peterson@uq.edu.au</p> <p>Susanne Hoverman DNRW</p> <p>Ms Penny Scott FNQ NRM Ltd 07 54208942</p> <p>Fiona Wellington, formerly of QMDC</p> <p>Susanne Hovermann (formerly of NRW)</p> <p>Dr Diane Conrick Diane.conrick@nrm.qld.gov.au</p> <p>Mark Cushing, SoE Unit Mark.cushing@epa.qld.gov.au</p>
--	---

Urban land use and master planning

<p>Gold Coast City Council, Bold Futures & Planning Scheme Review, with Humphrey Reynolds Perkins and Plan C</p> <p>Facilitation of options development and stakeholder 'speakouts' to review the strengths and weaknesses of the current Scheme and to identify key influences, trends and obstacles for the future Scheme</p> <p>Sustainability workshop, South-east Queensland Regional Plan, Department of Infrastructure and Planning</p> <p>Workshop with multiple stakeholders to set key directions for the SEQ Regional Plan for delivering desired regional outcomes for sustainability</p> <p>Local Growth Management Strategy Review workshop, Sunshine Coast</p>	<p>Dominic Hammersley, PM dominic.hammersley@hrppc.com.au</p> <p>John Abbott, principal town planner John.abbott@dip.qld.gov.au</p> <p>Warren Bunker, Planning</p>
--	---

Resume: Mary Maher

<p>Regional Council</p> <p>Councillors and executives' workshop to redefine Sunshine Coast's future settlement Plan to 2031</p>	<p>manager, Warren.bunker@sunshinecoast.qld.gov.au</p>
<p>Australian Green Development Forum & Gold Coast City Council</p> <p>Developers and Council staff working session to scope issues and opportunities for improved delivery of sustainability through the Planning Scheme</p>	<p>Chris Tanner, AGDF Chris.tanner@blighttanner.com.au</p>
<p>Waste Summit, Sunshine Coast Regional Council</p> <p>Minister McNamara and Councillors' Summit with key stakeholders to examine waste management options to landfill</p>	<p>Stephen.skull@sunshinecoast.qld.gov.au</p>
<p>Delfin Project, Rocky Springs Environmental Impact Statement</p> <p>Conduct of consultation focus groups on key EIS topics with multi-stakeholder groups for proposed development for 35000 people outside Townsville.</p>	<p>Tanya Hoare, project manager Tanya.hoare@lendlease.com.au</p>
<p>Redland Shire Council, Koala Policy and Strategy</p> <p>Staff training, strategy development and summit design and delivery with 25 presenters and 4 workshop sessions to develop Council's Koala Policy based on wide stakeholder input.</p>	<p>Dan Carter, Environment Danielc@redland.qld.gov.au</p>
<p>Southport Foreshore Parklands Concept Workshop, Gold Coast City Council</p> <p>Multiple stakeholders workshop reviewing the background studies to the Master Plan concept for the foreshore parklands and design key outcomes</p>	<p>Sarah Chalkley, GCCC Schalkley@goldcoast.qld.gov.au</p>
<p>Caloundra City Council, Local Growth Management Strategy to 2026</p> <p>Facilitation of a 6-workshops series with Councillors and executive management to define the settlement pattern for Caloundra City in 2026 and 2046, and to identify the key policy requirements for that pattern.</p>	<p>Tony O'Keeffe, Principal Strategic Planning, 07 54208942</p>
<p>SEQ Catchments and Queensland University of Technology: Urban Management School</p> <p>Design and conduct of a one-day workshop based on fourteen students' presentations about the rural-urban fringe in the region and its planning framework to ensure sustainable future development</p>	<p>Andrew Davidson, coordinator adavidson@seqcatchments.com.au</p>
<p>Brisbane City Council, Water Resources Branch</p> <p>Oxley Creek Rehabilitation Feasibility Study</p> <p>Communication manager, Oxley Creek Corridor Rehabilitation Strategy – <i>Communication Strategy</i> design and delivery 2004-05</p>	<p>Barry Ball, Director, Water Resources Barry.ball@brisbane.qld.gov.au</p>
<p>Caboolture Shire Council, Concept for Caboolture-Morayfield Principal Activity Centre</p> <p>Internal management workshops to examine options for progressing the SEQ Regional Plan designation of the CM area as a PACentre.</p>	<p>Mr Noel Harvey, Economic Development HarveyN@caboolture.qld.gov.au</p>
<p>Caloundra City Council – Maleny Community Precinct Plan</p> <p>Caloundra City Council – Maleny Community Precinct – design and delivery of a facilitation Strategy based on a community open day, summit workshop and focus groups to design the future of the precinct</p>	<p>Leah Bancroft, strategic planner l.bancroft@caloundra.qld.gov.au</p>
<p>Bayside Creeks Catchments Group, Brisbane City Council</p> <p>Community workshop to develop environmental performance standards for the Bayside component of the City Plan</p>	<p>Mike Patchett baysidecreeks@westnet.com.au</p>

Corporate strategy and organizational arrangements

Resume: Mary Maher

<p>Planning Program Review and Strategy, Planning and Environmental Management, University of Queensland, 2010 Staff review session, critical directions setting and curriculum framework development</p>	<p>John.minnery@uq.edu.au</p>
<p>Strategic Plan for USC Faculty, Faculty of Arts and Social Sciences, 2010 Faculty staff planning day to identify key elements of the Faculty vision and to examine options for improved knowledge sharing and direction-setting</p>	<p>Julie.matthews@usc.edu.au</p>
<p>Strategic Planning Day, Southern Gulf Catchments, 2010 Facilitated strategic planning session with Board and Staff with a focus on commercialisation arrangements and communications</p>	<p>ceo@southerngulf.com.au</p>
<p>Mental Health Alliance in Ipswich Region, Boilerhouse, University of Queensland Facilitation of a collaboration design exercise with ~25 non-government organizations in Ipswich Region to progress cooperative arrangements between themselves and Government funding bodies</p>	<p>Dr Dana Kelly, d.kelly@uq.edu.au</p>
<p>University of Queensland, Global Change Institute Concept plan and internal consultation process for establishment of GCI as a major University portal for sustainability-focused research and development</p>	<p>Jo Connah, PA to Deputy Senior Vice Chancellor j.connah@uq.edu.au</p>
<p>Affordable Housing Taskforce, Sunshine Coast Regional Council Action plan workshop for the taskforce's term of office</p>	<p>Robyn Douglas Robyn.Douglas@sunshinecoast.qld.gov.au</p>
<p>Future Directions Workshop, NRM Qld Regional Groups' Collective Strategic planning session with Regional NRM Group chairs and CEOs to define the future directions for the Qld collective</p>	<p>Andrew Drysdale, CEO Andrew.drysdale@regionalgroupscollective.com.au</p>
<p>Sunshine Coast Regional Council Workshop with staff to set directions for priority projects following amalgamation of environmental management functions</p>	<p>Warren Bunker, Planning Warren.bunker@sunshinecoast.qld.gov.au</p>
<p>Moreton Bay Regional Council, Environment Policy Unit Structure Workshop with staff to set directions for priority projects following amalgamation of environmental management functions</p>	<p>Melanie Brennan , Environment officer, Redcliffe SC</p>
<p>Australian Green Infrastructure Council, Business Planning Workshops with committees developing AGIC business plan for market-readiness of the Green Infrastructure rating tool</p>	<p>www.agic.net.au</p>
<p>Powerlink staff mentoring Mentoring of environmental manager responsible for sustainability strategy</p>	<p>Stephen Martin Stephen.martin@powerlink.com.au</p>
<p>Board Director, Port of Brisbane Corporation Corporate and sustainability strategies, and Environment Committee member</p>	<p>Jeff Coleman CEO, Port of Brisbane Corporation</p>
<p>SunWater Corporate and sustainability strategies, and Environment Committee member</p>	<p>Peter Boettcher CEO, SunWater</p>

<p>Brisbane City Council Preparation of a presentation defining the Key Result Areas and Key Performance Indicators for the Livable City's Twenty Outcomes</p> <p>Brisbane City Council, City Planning Branch, Key Result Areas for City Planning</p> <p>Workshop series with senior planners to develop performance measures for the planning function in Brisbane City</p>	<p>Jennifer Bartlett, Sustainability Mgr Jennifer.bartlett@brisbane.qld.gov.au</p> <p>Michael Papageorgiou, Director, City Planning</p>
---	--

Training in sustainability, natural resource management and facilitation

<p>Market based instruments, Department of Natural Resources & Water Two-day training course design and delivery of six sessions in Queensland and NSW; presentation at national MBI Forum 2008</p> <p>WWF Australia, & SKM (Brisbane), BCC, Facilitation Plus 3 offerings of one-day staff training course: <i>Facilitation Plus - 10 Tools for Facilitation</i></p> <p>Department of Natural Resources and Water <i>Social and Economic Impact Assessment for Regional NRM</i> With SKM, design and conduct of a six module training Course: <i>Social and Economic Impact Assessment for Regional NRM</i></p>	<p>Claire Heath, MBI project coordinator, Claire.heath@nrw.qld.gov.au</p> <p>Kimberley Dixon KDixon@wwf.org.au Susanne Cooper Scooper@skm.com.au</p> <p>John Mackenzie SIA Unit John.Mackenzie@nrw.qld.gov.au</p>
--	--

Mary Maher: career positions

Mary has professional experience spanning the career areas of university lecturing, policy development, consultancy and a number of high level Committee and Board positions.

- 11 years lecturing in universities for (QUT, University of Surrey UK, and the University of Nanjing, China),
- Four years as senior policy adviser and inaugural director of the Environmental Management Branch in Brisbane City Council establishing a team of 24 environmental scientists and planners,
- 12 years in private consultancy, managing a small business comprising 2 to six staff;
- Various appointed positions including Board Director, Deputy Chair, statutory panel member and community representative on a range of Government and Council committees; two directorships on State Government owned Corporations - Port of Brisbane Corporation (7 years) and SunWater (3 years).

Professional milestones

- Community representative on Brisbane City Council's Brisbane Inner City Advisory Committee 2006 - 08
- State Government appointment to Board of Directors, SunWater 2003-07
- President, West End Community Association, 2004 – 2007, and Board member, West End Community House 2005>2008 then President >2008
- Fellowship status, Environment Institute of Australia and New Zealand > 2004
- State Government appointment, Department of Natural Resources & Mines Referral Panel, Resource Operations (Water Allocation) Plans 2002 - 03
- Consultancy team work to win two Certificates of Merit in the 2002 awards, Planning Institute of Australia (Q)
- State Government appointment, Ministerial Advisory Review Board – *Moratorium on Farm Dams 2002-03*
- State government appointment to Board of Directors, Port of Brisbane Corporation 2000 – 2007
- Advisory Board member, Environmental School of Planning, Griffith University 2001+
- Graduate - (1) Mediation Skills Program of Queensland Community Justice Program, (2) Australian Institute of Company Directors Training for Directors course
- Deputy Chair - State Government's *Coastal Protection Advisory Committee* (2000-2005)
- President - Environment Institute of Australia & New Zealand (SE Qld chapter) 1998- 2002
- Chair - *River Users Group*, Brisbane River Management Group 1999 - 2001
- Board member - Australian Environmental Studies Program, Griffith University 1999 - 2001
- Team member - State Award 1999, Royal Australian Planning Institute,
- Executive member - Queensland Conservation Council, 1997-8
- National award for Excellence with Chenoweth & Associates - Royal Australian Planning Institute, *Pine Rivers Shire Greening Plan* 1994
- State-appointed chairperson - Brisbane River Management Plan *Development Team*, 1994 - 6
- Key note speaker - Symposium of the Japan Environmental Agency, Tokyo, 1994
- Inaugural Director, Environment Management Branch, Brisbane City Council 1988-1992

- Award winner 1993 - Environment Management Branch won the national *Banksia Award for Environmental Excellence*
- Environment Officer - appointed Brisbane City's Council's first environment officer, 1988
- Author - prepared the first handbook *Environmental Management In Local Government*, 1988 (Commonwealth Government Grant)
- Guest Lecturer - Nanjing University, People's Republic of China, 1983 (first half of 1983)
- Masters Program student - selected into first intake for Griffith University's *Masters of Science* program in Environmental Studies, 1976
- Graduate School Coordinator and *Energy Studies* Lecturer in London - Graduate School, Architectural Association, London (UK) 1974-5
- Geography lecturer - University of Surrey, United Kingdom, 1973- 4.

History of consultancy projects since 1992

- 4 feasibility studies for major land development projects including options development, scenario-testing and preferred strategy
- 15 major environmental training and awareness projects
- 30 conservation and natural resource (greening plan) strategies
- 6 waterways and coastal protection plans
- 3 major environmental communications and community consultation projects.
- 5 legislative and program reviews for the Commonwealth government
- 5 program evaluation projects
- 3 environmental impact statements for Queensland projects valued at >\$10million
- 4 national handbooks in environmental planning, ISO 14001, Sustainability and Green Jobs training
- 25 strategic and corporate plans
- 18 stakeholder consultation processes and stakeholder input to technical reports
- 16 environmental management plans and policy guidelines
- 4 state of the environment and 10 corporate sustainability reports.

Climate change and climate response focus

In 2007 Mary completed the international training program for presenters in the Climate Project led by Mr Al Gore. This work built on her UK experience as a lecturer in the graduate school's program in 'Energy Studies' in the Architectural Association, London.

In Brisbane in the 1970s, Mary initiated and implemented the community-based energy conservation campaign '*Smallalternatives*'. In 1982 she completed a Masters of Science degree on the adoption rates and general community response to the *Smallalternatives* energy efficiency campaign. Her second Masters degree examined the interrelationship between science, technology and society.